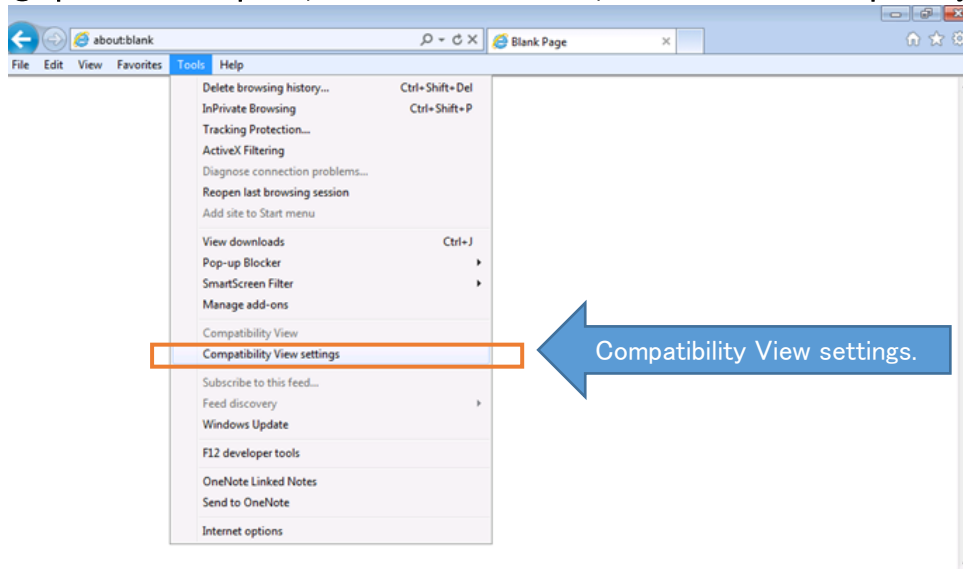


How to sign in the Test Navi Register

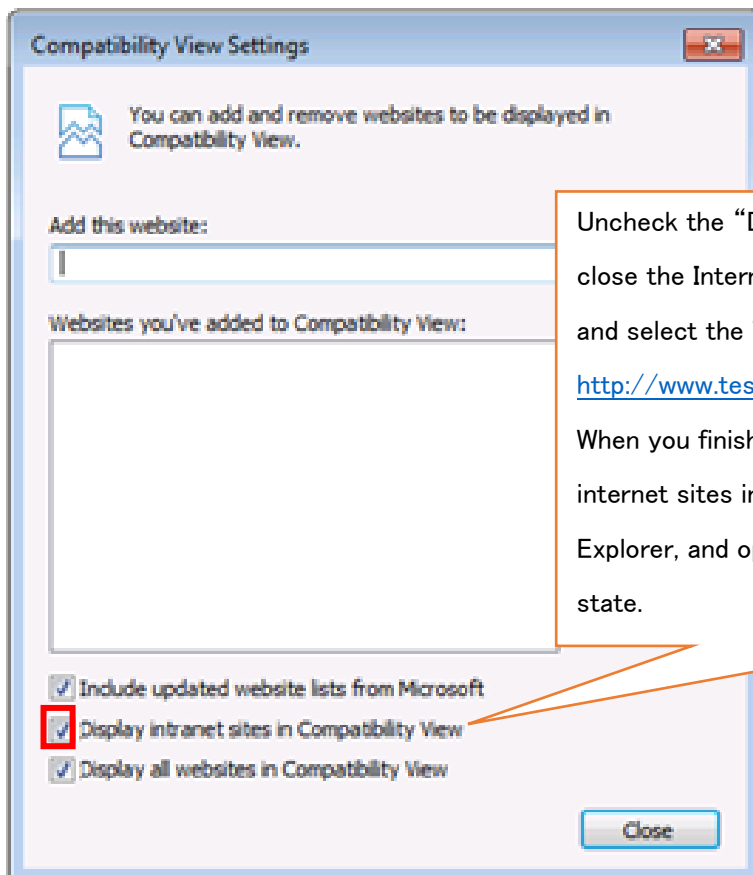
March 16, 2017
ESPEC Test Navi secretary

If you cannot sign in the Test Navi Register, try to change your PC Tools.

①Open Internet Explorer, select the Tools button, and then select “Compatibility View settings”.



②Compatibility View settings,



Uncheck the “Display internet sites in Compatibility View”, and close the Internet Explorer, and open Internet Explorer again, and select the Test Navi to sign in <http://www.test-navi.com/eng/index.html>

When you finish viewing the Test Navi, you check the “Display internet sites in Compatibility View” , and close the Internet Explorer, and open Internet Explorer to revert to the original state.